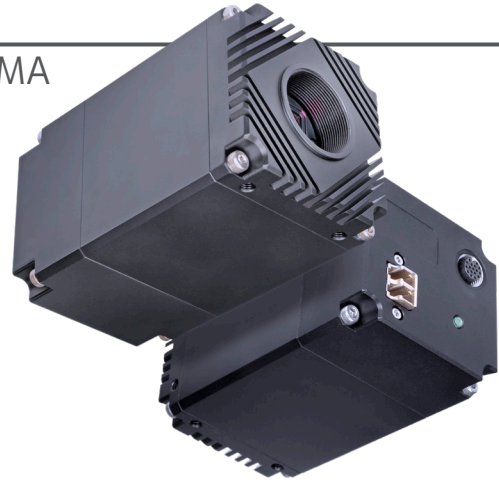


25GigE with Direct LC Fiber Connection and RDMA

25GiGE+RDMA

- Optimized with Remote Direct Memory Access (RDMA)
- Fanless case, no heatsinks required
- Wide operating temp -20 to 50°C ambient.
- Active sensor alignment
- Integrated optical transceiver
- 17-pin M12 GPIO for enhanced camera control



Atlas25 Models

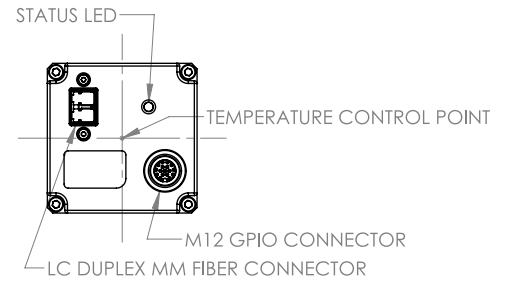
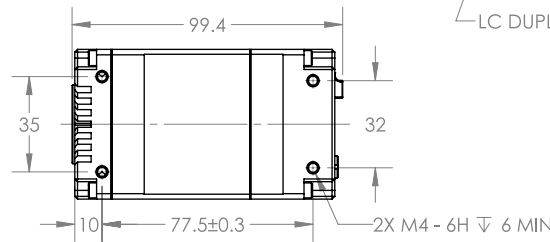
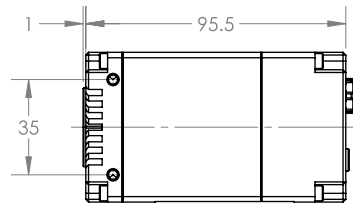
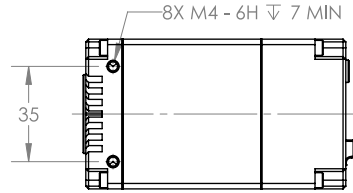
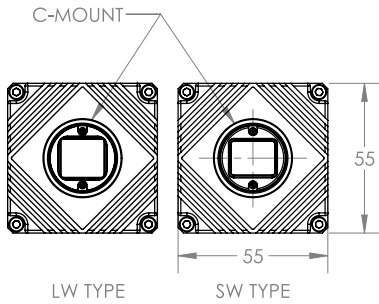
Model	MP	Resolution	FPS	Sensor	Format	Pixel Size	Shutter	Lens Mount	Chroma	GigE Interface
ATV245S	24.5 MP	5320 x 4600 px	90 fps	Sony IMX530 CMOS	1.2"	2.74 µm	Global	C-mount	M/C	25GigE, LC Fiber Optic
ATV204S	20.4 MP	4504 x 4504 px	108.3 fps	Sony IMX531 CMOS	1.1"	2.74 µm	Global	C-mount	M/C	25GigE, LC Fiber Optic
ATV162S	16.2 MP	5320 x 3040 px	152 fps	Sony IMX532 CMOS	1.1"	2.74 µm	Global	C-mount	M/C	25GigE, LC Fiber Optic
ATV124S	12.3 MP	4096 x 3000 px	176.4 fps	Sony IMX535 CMOS	1/1.1"	2.74 µm	Global	C-mount	M/C	25GigE, LC Fiber Optic

Specifications

Interface, Power, and Size Information		Imaging Properties	
Digital Interface	25GBASE-SR LC Duplex MM Fiber Connector (OM4, 850nm)	Image Buffer	880 MB
Transport Layer Protocol	UDP (GigE Vision), RDMA (GigE Vision 3.0 / RoCE v2)	Image Processing	Gain, gamma, black level, white balance, LUT, CCM, pixel correction
GPIO Interface	17 pin M12 connector	Pixel Formats	Mono8/10/12/16, Bayer8/10/12/16, RGB8, BGR8, YCbCr8, YCbCr411, YUV422, YUV411
Opto-isolated I/O ports	1 input, 3 output	Image Modes	Horizontal and vertical binning, decimation, ROI, horizontal and vertical flip
Non-isolated I/O ports	2 bi-directional or 2TTL/DI	ADC	8, 10, 12 bit
Differential I/O ports	3 RS-422/HTL/TTL (1 selectable as DI)	Gain Range	0 dB to 48 dB analog and digital
Dimensions	55 x 55 x 95.5 mm	Standard and Certifications	
Lens Mount	C-mount	Standard	GigE Vision v3.0
Weight	325 g	Compliance	CE, FCC, RoHS, REACH, WEEE
Power Requirement	12-24 VDC GPIO	Storage Temperature	-30 to 60°C
Power Consumption	15 W Typical	Operating Temperature	-20 to 50°C Ambient
Camera Features		Humidity	Operating: 20% ~ 80%, relative, non-condensing
User Sets	1 default and 2 custom	Storage Humidity	20% ~ 95%, relative, non-condensing
File system size	16 MB	Shock and Vibration	DIN EN 60068-2-27, DIN EN 60068-2-64
Chunk Data	Image, CRC, histogram stats, timestamp, line status, sequencer set, pixel format, width/height, offset X/Y, pixel dynamic range min/max, gain, black level, exposure time	Industrial EMC Immunity	DIN EN 61000-6-1 ESD 4kV
Event Data	Exposure start/end	Warranty	3 years
Counter & Timer	2 counters and 2 timers		
Sequencer	Exposure time, gain		
Synchronization	Software trigger, hardware trigger, PTP (IEEE 1588)		

25GigE with Direct LC Fiber Connection and RDMA

CASE TYPE	MODELS
LW TYPE	ATV204S ATV245S
SW TYPE	OTHER MODELS



17-Pin GPIO

Pin	Signal	Notes
2	LINE2	Non-scaled I/O
4	LINE3	
12	LINE6PLUS	
13	LINE6NEG	
14	LINE7PLUS	
15	LINE7NEG	
16	LINE8PLUS	
17	LINE8NEG	RS-422 Differential Inputs

Pin	Signal	Notes
11	OPTOGNDB	Group B Optically Isolated I/O
10	LINEG (OUT)	
9	LINE4 (OUT)	
8	LINE0 (IN)	
7	LINE1 (OUT)	Group A
6	OPTOGNDA	
5	GND	
3	VOUT	Power
1	VAUX	

