

LINEA HS2 8k / 16k

High Speed TDI Cameras

PRELIMINARY



KEY FEATURES

- 8k/16k 1 MHz max line rate
- 65 dB dynamic range
- On chip 2x binning
- Multi-array TDI
- CLHS CX4 12.5G AOC output

TYPICAL APPLICATIONS

- Semiconductor wafer inspection
- High density packaging
- Genomics and life sciences
- Flat panel display
- Web inspection
- General machine vision

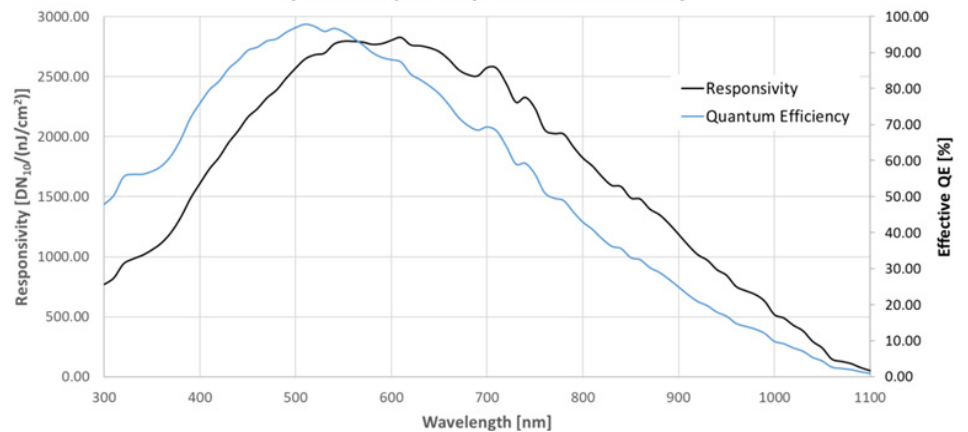
The Industry's First 16k 1MHz TDI Camera

Teledyne DALSA's new Linea™ HS2 represents another breakthrough in next generation TDI technology. Designed for ultra high speed imaging in light starved conditions, this camera offers superior image quality with with 8k and 16k resolution at a max line rate of 1MHz optimized for 266 nm. It has a CLHS data interface that achieves 16 GB/s data throughput with field-proven reliability in data transmission.

SPECIFICATIONS

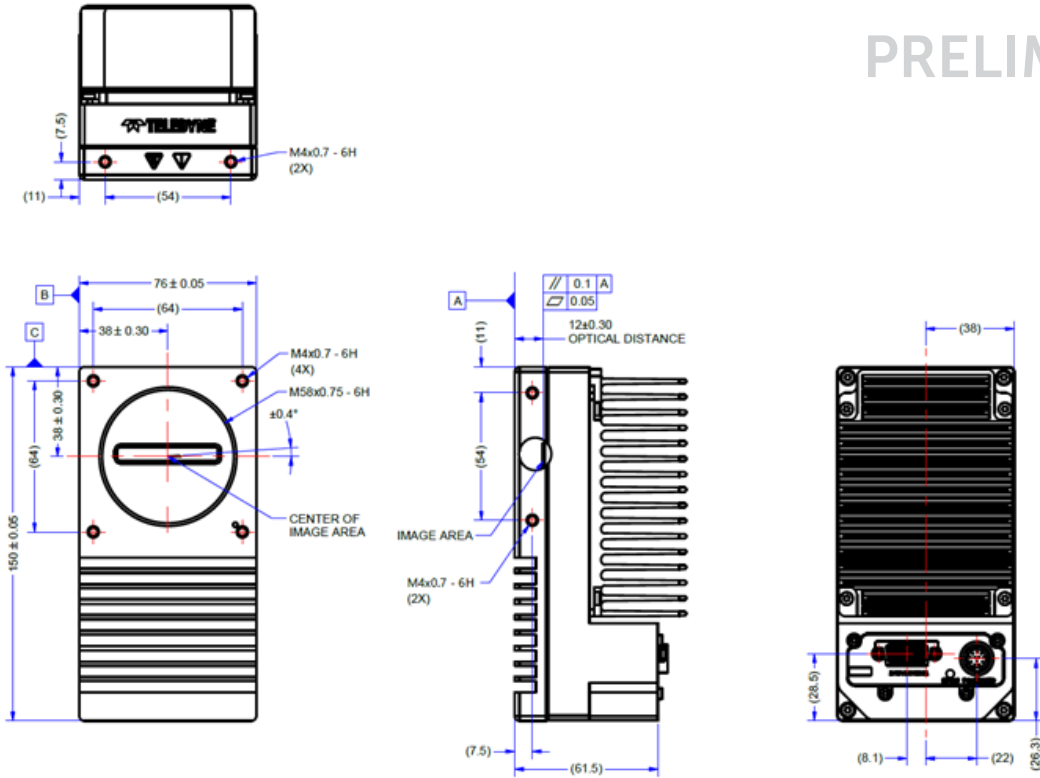
| Part Number | H2-HM-08K100H-00-B | H2-HM-16k100H-00-B |
|---------------------------|-----------------------------|-----------------------------|
| Resolution, Pixel | 8,192 x (128+128+32) | 16,384 x (128+128+32) |
| Max Line Rate, kHz | 1000 | |
| Pixel Size, μm | 5 x 5 | |
| Data Format, bit | 8 or 10 | |
| QE %, peak | 95 | |
| Dynamic Range, dB | 65 | |
| Full Well, ke- | 33 | |
| Read Noise, typical e- | 20 | |
| Power Dissipation, W | 28 | 56 |
| Operating Temp, °C | 0 to +50, frontplate | |
| Dimension, mm | 76 (W) x 150 (H) x 73.5 (D) | 97 (W) x 180 (H) x 76.9 (D) |
| Weight, g | 940 | 1480 |
| Lens Mount | M58 x 0.75 | M90x1 |
| Data Interface | CLHS CX4 | Dual CLHS CX4 |
| GPIO | Hirose 12-pin | |
| Power | +24 VDC, Hirose 12pin | |
| Regulatory compliant | CE, FCC, KC and RoHS | |

SPECTRAL QUANTUM EFFICIENCY (TBD)

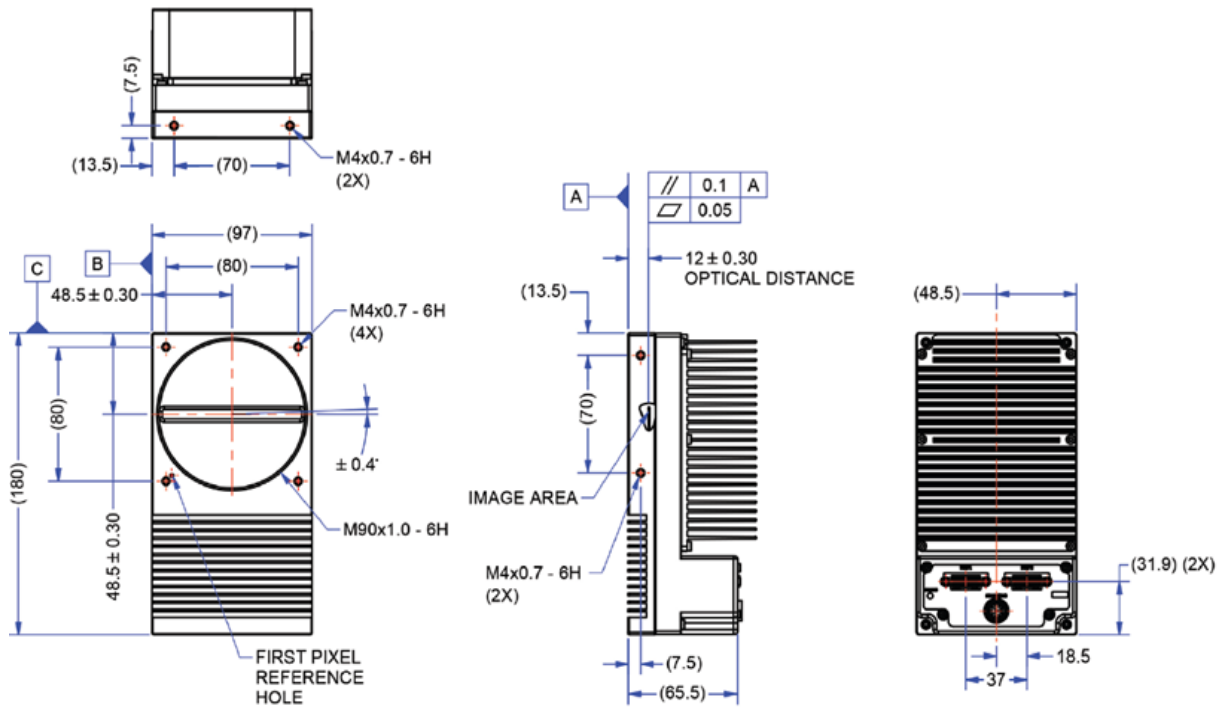


8K MODEL

PRELIMINARY



16K MODEL



FOR MORE INFORMATION CONTACT:

THE AMERICAS Boston, USA | +1-978-670-2000 | TDI_sales.americas@teledyne.com
 EUROPE Munich, Germany | +49-89-89-54-57-380 | TDI_sales.europe@teledyne.com
 JAPAN & ASIA PACIFIC Tokyo, Japan | +81-3-5960-6353 | TDI_sales.asia@teledyne.com
 SHANGHAI OFFICE Shanghai, China | +86-21-6013-1571 ext. 801 | saleschina@teledyne.com

This document does not contain information whose export/transfer/disclosure is restricted by the Canadian Export Control regulation. Teledyne DALSA has its corporate offices in Waterloo, Canada. Teledyne DALSA reserves the right to make changes at any time without notice. 2026 © Teledyne DALSA.

Revision: 03-070-25016-01
 Revision Date: 2026 06 05